


2 Position 2 Way Solenoid Valves

This kind of valve widely used in wide different industry, you can find the valve with different material like brass, stainless steel, engineering plastic, and they are used for pressure range from 0 to 50 bar, temperature from -10 °C to 180°C. If there is no current models with your meet, please contact us, we are available to provide specialized valves according to your requirement.



General Information About Solenoid Valve

Inner structure and categories of two way solenoid valves 

Direct acting solenoid valves

Including normal close style (N.C.) and normal open style(N.O.). The N.C. style solenoid valve stay close at power off condition. When power on, the coil yields electricity-magnetic force, which exceed the spring force and hence pulls active armature approaching to static armature, the valve becomes open; when power off, the electricity-magnetic force disappear and the active armature go back to its original place by the spring force, the valve close. The N.O. style is just opposite. These valve are normally simple structure, dependable action, fast response, high, frequency and with $\leq 6\text{mm}$ small orifice size(N.O. style $\leq 4\text{mm}$).

Diaphragm pilot solenoid valves

This style valve makes main valve and pilot valve together, when power on, the coil yields electricity-magnetic force pulls active armature approaching to static armature, the pilot valve open and control the main valve to open; when power off, the electricity-magnetic force disappear and with the gravity and spring force, the active armature close the pilot valve, which control the main valve to close. The N.O. style is just opposite. These valve are normally with bigger orifice size and $\leq 10\text{Bar}$ working pressure and with zero differential working pressure.

Piston pilot solenoid valves

Similar with piston pilot solenoid valves, but supports for higher pressure and temperature, with $\geq 1\text{ Bar}$ differential working pressure.

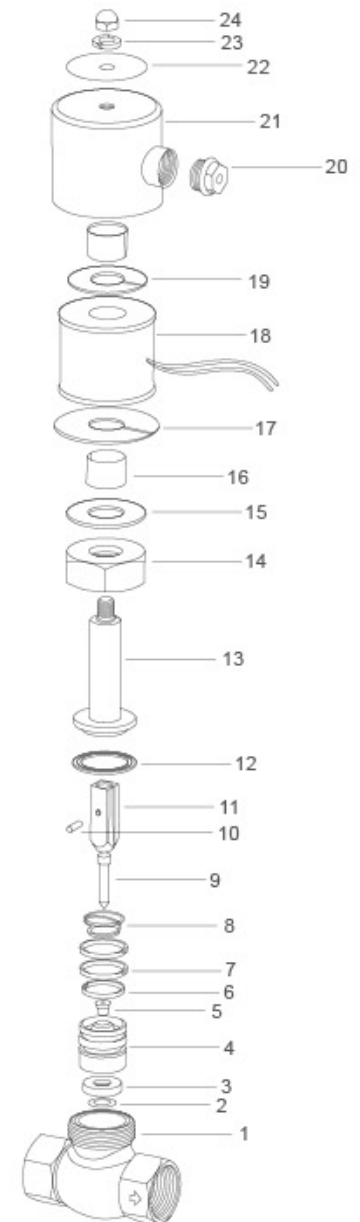
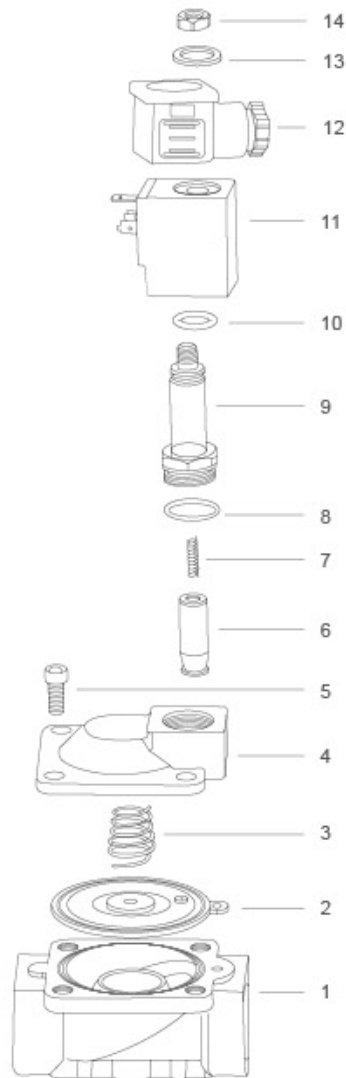
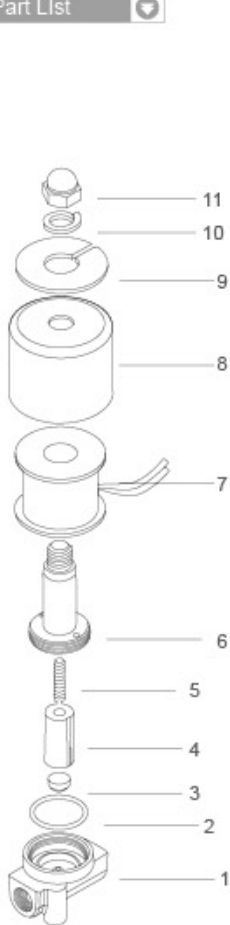
Seal Features 

| Material | NBR | HNBR | EPDM | VMQ | FKM | PTFE | PU |
|-----------------------------|-----|------|------|------|------|------|------|
| Highest working temperature | 80℃ | 120℃ | 120℃ | 180℃ | 120℃ | 200℃ | 80℃ |
| Lowest working temperature | -5℃ | -10℃ | -20℃ | -40℃ | -20℃ | -50℃ | -20℃ |
| Anti-burning | × | × | × | △ | ◎ | ◎ | △ |
| Steam | × | △ | ◎ | ○ | △ | ○ | × |
| Oil | ◎ | ◎ | × | △ | ◎ | ◎ | ◎ |
| O ₃ | △ | ◎ | ◎ | ◎ | ◎ | ◎ | ◎ |
| Chemical | △ | ○ | ◎ | ◎ | ◎ | ◎ | ◎ |
| Acid | △ | ○ | ◎ | △ | ◎ | ◎ | × |
| Alkalinity | ○ | ◎ | ◎ | △ | ◎ | ◎ | × |
| Water | ○ | ○ | ◎ | ○ | ○ | ◎ | ◎ |
| Wearing | ○ | ◎ | ○ | × | ○ | ◎ | ◎ |
| Anti distortion | ○ | ○ | ○ | ◎ | ○ | × | × |
| Tension | ◎ | ◎ | ◎ | × | ○ | × | ◎ |

Description of the symbol: ◎ Very good ○ Good △ Normal level × Not OK

General Information About Solenoid Valve

Part List



| No | Designation |
|----|---------------|
| 1 | Valve body |
| 2 | O-ring |
| 3 | Seal pad |
| 4 | Pilot |
| 5 | Spring |
| 6 | Armature |
| 7 | Coil |
| 8 | Steel washer |
| 9 | Washer |
| 10 | Spring washer |
| 11 | Nut |

| No | Designation |
|----|-----------------------|
| 1 | Valve body |
| 2 | Diaphragm |
| 3 | Diaphragm spring |
| 4 | Valve cover |
| 5 | Hexagon screw |
| 6 | Pilot units |
| 7 | Plunger Spring |
| 8 | O-ring |
| 9 | Plunger tube assembly |
| 10 | O-ring |
| 11 | Coil |
| 12 | Connector |
| 13 | Gasket |
| 14 | Lock Nut |

| No | Designation | No | Designation |
|----|--------------|----|-----------------|
| 1 | Valve body | 13 | Static armature |
| 2 | Washer | 14 | Nut |
| 3 | Seal pad | 15 | Gasket |
| 4 | Valve core | 16 | Bushing |
| 5 | Seal | 17 | Steel plate |
| 6 | Gasket | 18 | Coil |
| 7 | Guide ring | 19 | Steel plate |
| 8 | Spring | 20 | Nut |
| 9 | Valve needle | 21 | Steel cover |
| 10 | Pin | 22 | Min plate |
| 11 | Armature | 23 | Spring washer |
| 12 | Seal ring | 24 | Nut |



E

2V Series 2/2 Solenoid Valve



Ordering Code

| 2V | 025 | 06 | — | AC220V | — | V |
|-----------------------------------------------------------------------|-------------------------------------------------------------------|----------------------------------------------------------------------------------------|---|--------------------------------------------------------------------------------------------------------------------------|---|--------------------------------------------------------------------|
| Specification Code 2V:Two-positionTwo-way Solenoid Valve | Aperture of Flow Rate 025:2.5mm 130:13mm 250:25mm | Port Size 06:G1/8" 08:G1/4" 10:G3/8" 15:G1/2" 20:G3/4" 25:G1" | | Standard Voltage DC12V DC24V AC24V 50Hz/60Hz AC110V 50Hz/60Hz AC220V 50Hz/60Hz AC380V 50Hz/60Hz | | Oil Seal Code Blank:NBR V:VITON(For High temperature) |

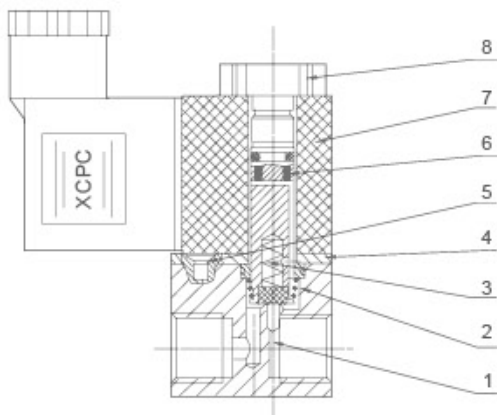
Graphic Symbol



Specifcation

| Model | 2V025-06 | 2V025-08 | 2V130-10 | 2V130-15 | 2V250-20 | 2V250-25 |
|-----------------------------|------------------------|----------|---------------------------|----------|----------|----------|
| Working Medium | Air,Water,Oil | | | | | |
| Motion Pattern | Direct Drive Type | | Guide Type | | | |
| Type | Normal Close Type | | | | | |
| Aperture of Flow Rate(mm) | 2.5 | | 13 | | 25 | |
| CV Value | 0.23 | | 6.2 | | 23 | |
| Port Size | G1/8" | G1/4" | G3/8" | G1/2" | G3/4" | G1" |
| Operation Fluid Viscosity | 20 CST (Below) | | | | | |
| Working-pressure | Air,Water,Oil 0~0.8MPa | | Air,Water,Oil 0.05~0.7MPa | | | |
| Max. Pressure Resistance | 12kgf/cm ² | | 10.5kgf/cm ² | | | |
| Operating Temperature Range | -10~~+80℃ | | | | | |
| Voltage Range | ±10% | | | | | |
| Protect Class | IP65 | | | | | |
| Power Consumption | AC:7VA860Hz PC:6W | | | | | |
| Insulation | F Class | | | | | |
| Material of Body | Aluminum or Brass | | | Brass | | |
| Material of Oil Seal | NBR or VITON | | NBR | | | |
| Shortest Excitation Time | 0.05 Second | | | | | |

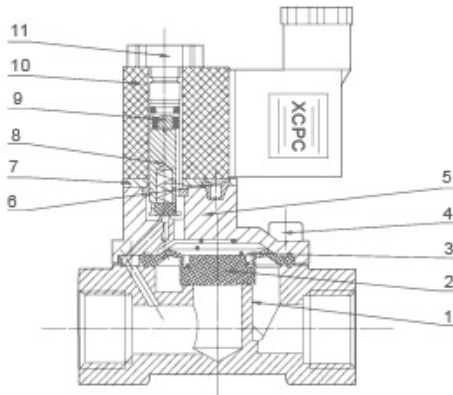
Internal structure



| No | Name |
|----|-----------------------|
| 1 | Body Of Valve |
| 2 | Spring |
| 3 | Assembly Of Iron Core |
| 4 | Assembly Of Iron Core |
| 5 | Cruciform Slot Screw |
| 6 | Platen |
| 7 | Coil |
| 8 | Nut |

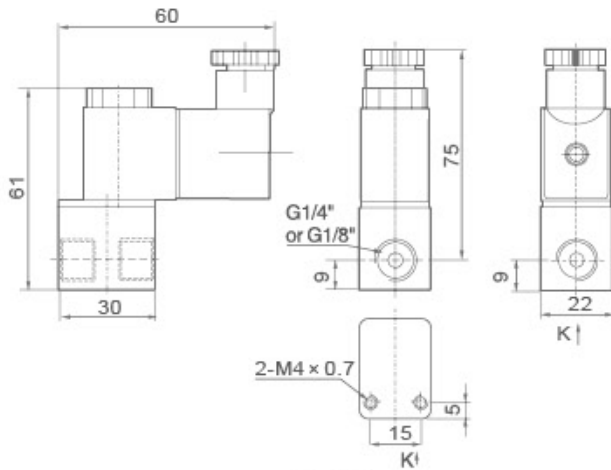
2V Series 2/2 Solenoid Valve

Internal structure

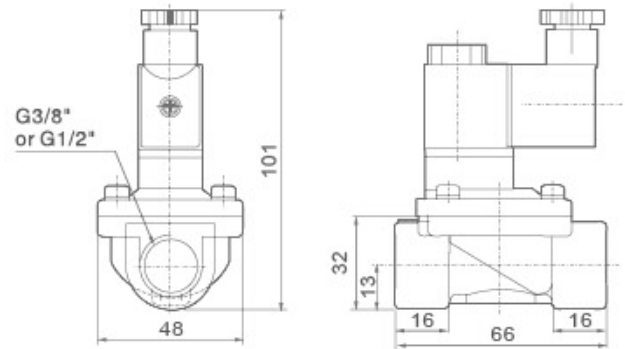


| No | Name |
|----|-----------------------|
| 1 | Body Of Valve |
| 2 | Diaphragm |
| 3 | Spring |
| 4 | Socket Hexagon Screws |
| 5 | Cover board |
| 6 | Cruciform Slot Screw |
| 7 | Platen |
| 8 | Assembly Of Iron Core |
| 9 | Assembly Of Iron Core |
| 10 | Coil |
| 11 | Nut |

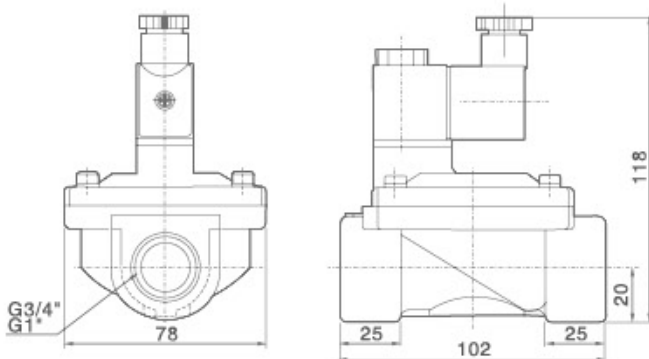
Overall Dimensions



2V025



2V130



2V250



E