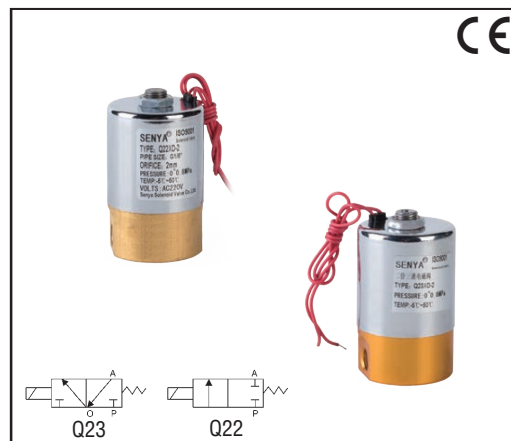


## Features

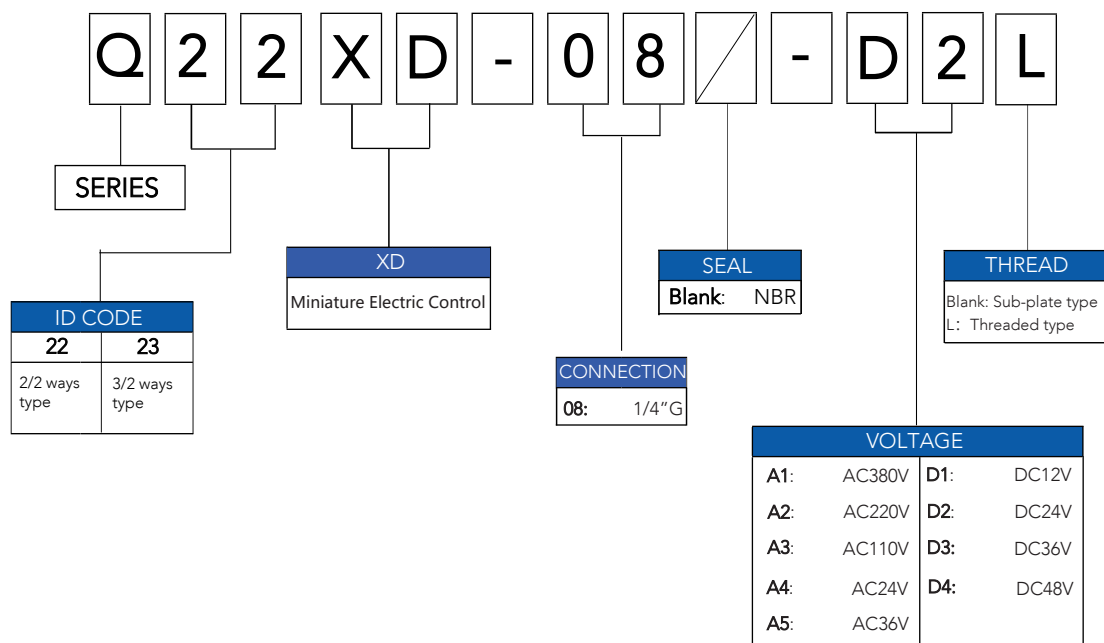
- Q23XD type solenoid valve is light flux reversing component, it's usually used as the piloted heavy capacity reversing valve and control valve of pneumatic direct route, it's also separately control the actuator of least air consumption.
- Q22XD type solenoid valve mainly used in control the on, off of gas flow, it's usually used as solenoid valve.



## Electrical

Standard Coil	Watt Rating and Power Consumption				Spare Coil Part Number			
	DC Watt	AC			General Purpose		Explosionproof	
		Watt	VA Holdin	VA Inrus	AC	DC	AC	DC
H/F	5	7	13	24	XD-AC	XD-DC	-	-
-	-	-	-	-	-	-	-	-
-	-	-	-	-	-	-	-	-

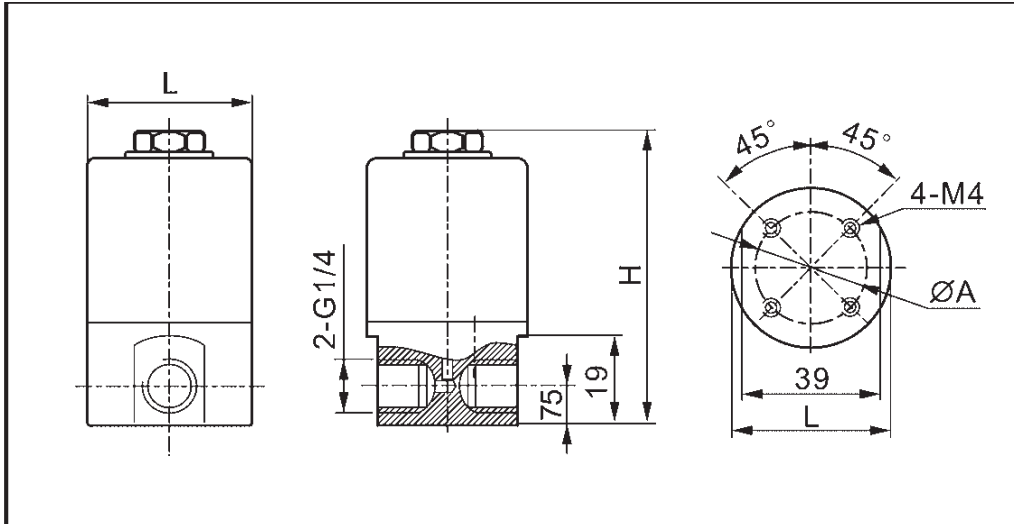
## Ordering Code



### Order Example:

Q series direct acting 2/2 ways solenoid valve, 1/4" port size, NBR seals, DC24V, thread type  
**SENYA part# Q22XD-08-D2L**

## Dimensions Sheet (mm)



Model	A	H	L
Q22XD-08-D2L	42	73	31
Q23XD-08-D2L	42	73	31

**IMPORTANT:** Valves may be mounted in any position, except as noted in specifications table.

Model	Q22XD-08-D2L	Q23XD-08-D2L
Working Pressure	0-0.8MPa	
Working Temperature	-5~40°C	
Medium Temperature	-5~50°C	
Reversing Time	≤ 40 ms	
Life Cycle	≥ Three Million Times	
Voltage	AC : 220V, 110V, 36V, 24V DC: 110V, 48V, 36V, 24V, 12V	

## Specifications (Metric units)

Pipe Size (mm)	Orifice Size (mm)	CV Flow Factor	Operating Pressure Differential (Bar)						Max. Fluid Temp. °C		Brass	Stainless Steel 304	Watt Rating/ Class of Coil Insulation		
			Min.	Max. AC		Max. DC									
				Air-Inert Gas	Water	Light Oil less 50 CST	Air-Inert Gas	Water	Light Oil less 50 CST	AC			DC	Catalog Number	Catalog Number
NORMALLY CLOSED (Closed when de-energized)															
1/4	2.0	4.8	0	8	8	-	8	8	-	50	50	Q22XD-08-D2L	-	-	-
1/4	2.0	4.8	0	8	8	-	8	8	-	50	50	Q23XD-08-D2L	-	-	-

**\*Note:**

Standard Voltages must be specified when ordering. Other voltages please consult SENYA staff for more details