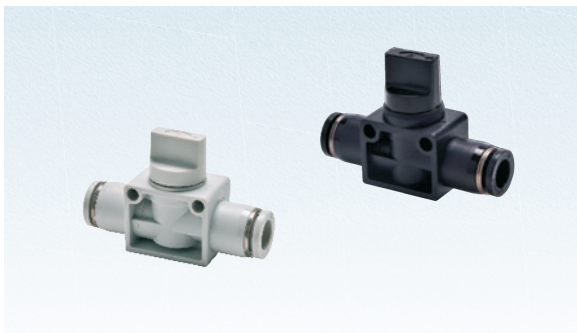


PHV series



Specification

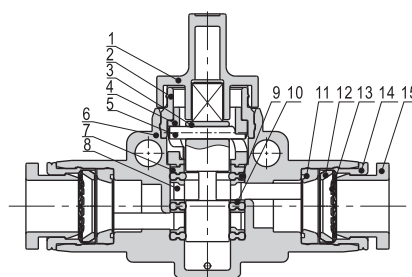
Operating pressure	0~9kgf/cm ² (0~0.9MPa)
Negative pressure	-750mmHg(10Torr)
Proof pressure	1.5MPa
Temperature range(°C)	0~60
Applicable tubing	Nylon or Polyurethane
Color	Grey/Black

Table for interface port and tube O.D.

Product series	Port size			
	Φ6	Φ8	Φ10	Φ12
PHV	●	●	●	●

Inner structure

Model: PHV



NO.	Name	Material
1	Knob	POM
2	Fixing ring	Aluminum alloy
3	Spool	Aluminum alloy
4	Cam groove block	POM
5	Pin	Stainless steel
6	Plastic body	PBT
7	Locating block	Aluminum alloy
8	Spacer	POM
9	Special shape O-ring	NBR
10	Spacer ring	Aluminum alloy
11	Special shape O-ring	NBR
12	Locating seat	POM
13	Spring gasket	Stainless steel
14	Locating ring	Aluminum alloy
15	Plastic interface	POM

Symbol



Product feature

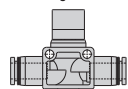
1. When the three-way valve is closed, the outlet pressure is released, which facilitates in commissioning and maintenance.
2. The finger valve has excellent flow characteristic and high sensitive anti-direction characteristic.

Ordering code

PHV 6 A □

Fitting type

PHV: Finger valve



Standard color

Standard color	Specification
Blank: Gray	Release button: Gray Body: Gray
D: Black	Release button: Black Body: Black

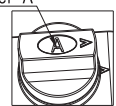
Port size

6: Φ6mm
8: Φ8mm
10: Φ10mm
12: Φ12mm

Valve specification

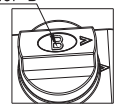
A: Three-way

Knob identifier "A"



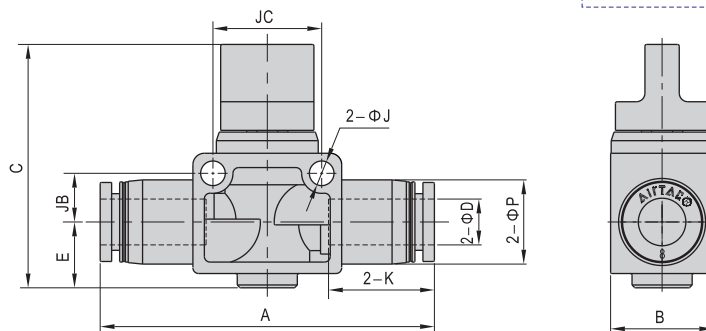
B: Two-way

Knob identifier "B"



Dimensions

Model: PHV



Model\Item	ΦD	A	B	C	ΦP	K	E	ΦJ	JB	JC
PHV6□	6	51.5	17	40.5	12.5	16.5	10	4.3	8	18
PHV8□	8	58.5	18	42.5	15	18.5	11.5	4.3	8.5	19
PHV10□	10	66	21	42	18	21	11	4.3	11	24
PHV12□	12	71	22	46	21	23	13	4.3	11	24

Note: "□" indicates "A" or "B", "A" indicates three-way, and "B" indicates two-way.
The two kinds of valve have same dimensions.

Diagram of finger valve in the open and closed states

 Closed state	Valve is closed, when the angle between the arrow on knob and the arrow on valve body is 90 degree 	When the three-way valve is closed, the outlet pressure is released, which facilitates in commissioning and maintenance. (as figure below)
	Valve is open, when the direction of the arrow on commutation knob is consistent with that on valve body. 	